

Warranty information

Please keep your original receipt for warranty.

Please fill out the online warranty form in order to qualify for the manufacturer's warranty.

www.herma.com.au/warranty

The warranty covers defects in workmanship and materials, provided this product has been installed in a normal environment and maintained according to the written instructions. Herma warrants the product against loss of usefulness, discolouration or deterioration of optical quality within the warranty period as a result of manufacturing or material defects. This warranty applies only within Australia.

Please return your goods to the place of purchase for all warranty claims.

Conditions

Any equipment replaced pursuant to the terms of this warranty shall be retained by Herma

All costs related to de-installation and re-installation of the product covered by this warranty are not the responsibility of Herma Technologies. Herma will not be responsible for any consequential damages during or following installation procedures.

Herma is not responsible for any freight costs relating to repair or replacement. Equipment must be returned to Herma in suitable packing to prevent damage in transit. Herma will not accept any responsibility for damage to the equipment caused by inadequate or unsuitable packing, or for any damage howsoever caused whilst the goods are in transit.

Herma Technologies shall not be liable for any injury, loss or damage, direct or consequential, arising out of the use of, misuse of, or inability to use, the equipment.

This Warranty does not cover any product which has been subjected to misuse, abuse, neglect, accidental or intentional damage, improper voltage or any alteration which affects the reliability or performance of the equipment not attributable to faulty manufacture, parts or labour and without limiting the generality of the foregoing shall not apply where the defect arose as the result of the following circumstances:

This Warranty does not cover any product where usage, adaptation or installation (including wiring of electrical connections) are not in accordance with our written installation and operating instructions.

Warranty Periods:

White Board Projection Screen: One year from date of purchase.

Information in this document is subject to change without notice.

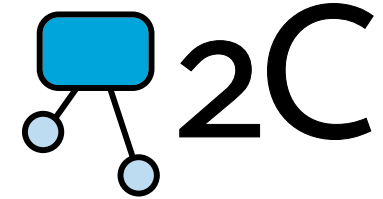
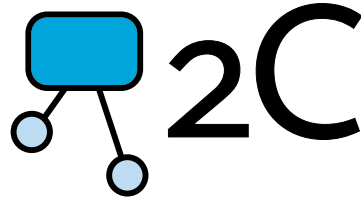
© Herma Technologies. All rights reserved.

This document is protected against unauthorised copying electronic or otherwise.

Trademarks used in this text: 2C and 2C logo are registered trademarks of Herma Technologies.

Other trademarks and trade names used in this document remain the property of the relevant owners.

2C_WriteIT_Jul12_v1.1



For more information please go to
www.2cdisplays.com.au
or call 1300 730 025

2C Write IT White Board
Projection Screen Manual

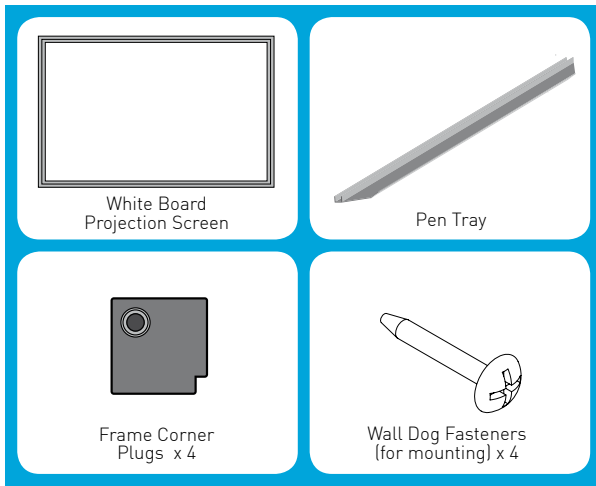
To the owner

Congratulations on purchasing an Australian made 2C White Board!

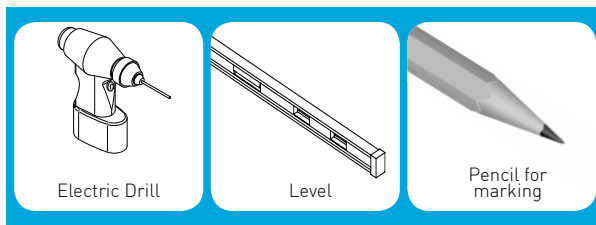
This White Board screen has an optimised low glare porcelain (vitreous enamel) steel surface. This quality screen uses the finest optical and mechanical components to give a truly satisfying experience.

Please take a moment to review this manual, as it will ensure you many years of service from your new 2C Write IT White Board Projection Screen.

Supplied



Required (not supplied)



PLEASE CHECK THAT YOU HAVE ALL THE COMPONENTS BEFORE ASSEMBLY.

Installing the assembled screen

Step 1

Pen Tray

Locate and clip on lower frame section.

Step 2

Locate the position of the Screen Board on the wall.

Step 3

Fix the Screen Board directly to the wall at the corner(s) using the fasteners supplied.

1. Install Screen Board quickly and easily using a Phillips® screwdriver
2. No hole spotting; locate position of Screen Board and fix directly to wall.
3. Wall adhesive (Liquid Nails or similar) can be applied to the rear of the board to assist mounting and fixing to the wall.

Step 4

Insert frame corner Plugs

To hide fastener heads, push plug into frame corner holes after fixing Whiteboard to wall.

Important Notes:

PEEL BACK ADHESIVE PROTECTIVE COVER FROM THE SURFACE BEFORE USE.

DO NOT USE PERMANENT MARKERS ON THIS WRITING SURFACE.

TO KEEP THE WRITING SURFACE IN OPTIMAL CONDITION IT IS RECOMMENDED THAT IT BE THOROUGHLY CLEANED AT LEAST EVERY 2-3 WEEKS.

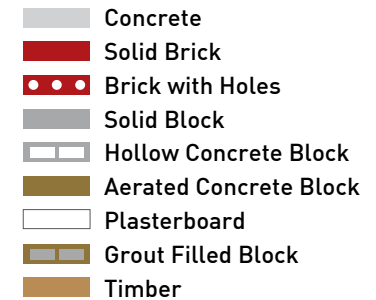
Notes for installation

The Wall-Dog™ screw anchor is used for fastening into wallboard and other masonry based materials.

When fastening into wallboard or wood, no pre-drilling is required; the anchor is inserted through the fixture and screwed in with an ordinary Phillips® screwdriver.

Fastening into concrete, hollow or grout filled block, brick and hard plaster requires a pre-drilled 5mm hole.

Suitable Base Materials:



Care instructions

The writing surface on this whiteboard is porcelain (vitreous enamel) steel. It is recommended that the surface be cleaned before its initial use, with a mild detergent and a soft cloth to remove any accumulated residue during manufacture.

Whilst the surface will wipe clean some whiteboard markers may leave a stain (ghosting) due to solvents and pigments used in the markers. If ghosting does occur, it is recommended that the type of marker be changed, and the whiteboard be cleaned with a suitable white board cleaner or methylated spirits on a clean soft cloth.

Do not at any time, clean the writing surface with harsh solvents, abrasive cleaners, scour pads or paper towels.

To keep the writing surface in optimal condition it is recommended that it be thoroughly cleaned at least every 2 – 3 weeks.